

**MAPSET CONTENTS**

- (A). Operational Area Chart
- (B). Satellite Map
- (C). Seabed Composition Map
- (D). Underwater TopographyMap

**PRODUCER**



**PUBLISHER**



**Campaign Description**

A simple 3 mission training campaign designed to help newcomers learn the basics of modern submarine warfare.

It follows the building block approach where each new mission builds upon the knowledge gained from the previous one.

Due to the training nature of the campaign this mapset includes more information than usual, including the accurate position of the target in the first mission and relative small search areas for the other two missions.

**MODERN NAVAL WARFARE**

**OPERATION FROM DUSK TILL DAWN**

**CAMPAIGN MAPSET • SHEET 1 OF 2**

**UNITS**

- nautical miles - NM
- meters (feet) - m (ft)
- knots (meters/sec) - kts (m/s)



**PROJECTION**  
WGS 84  
(decimal notation)

**SYMBOLY**

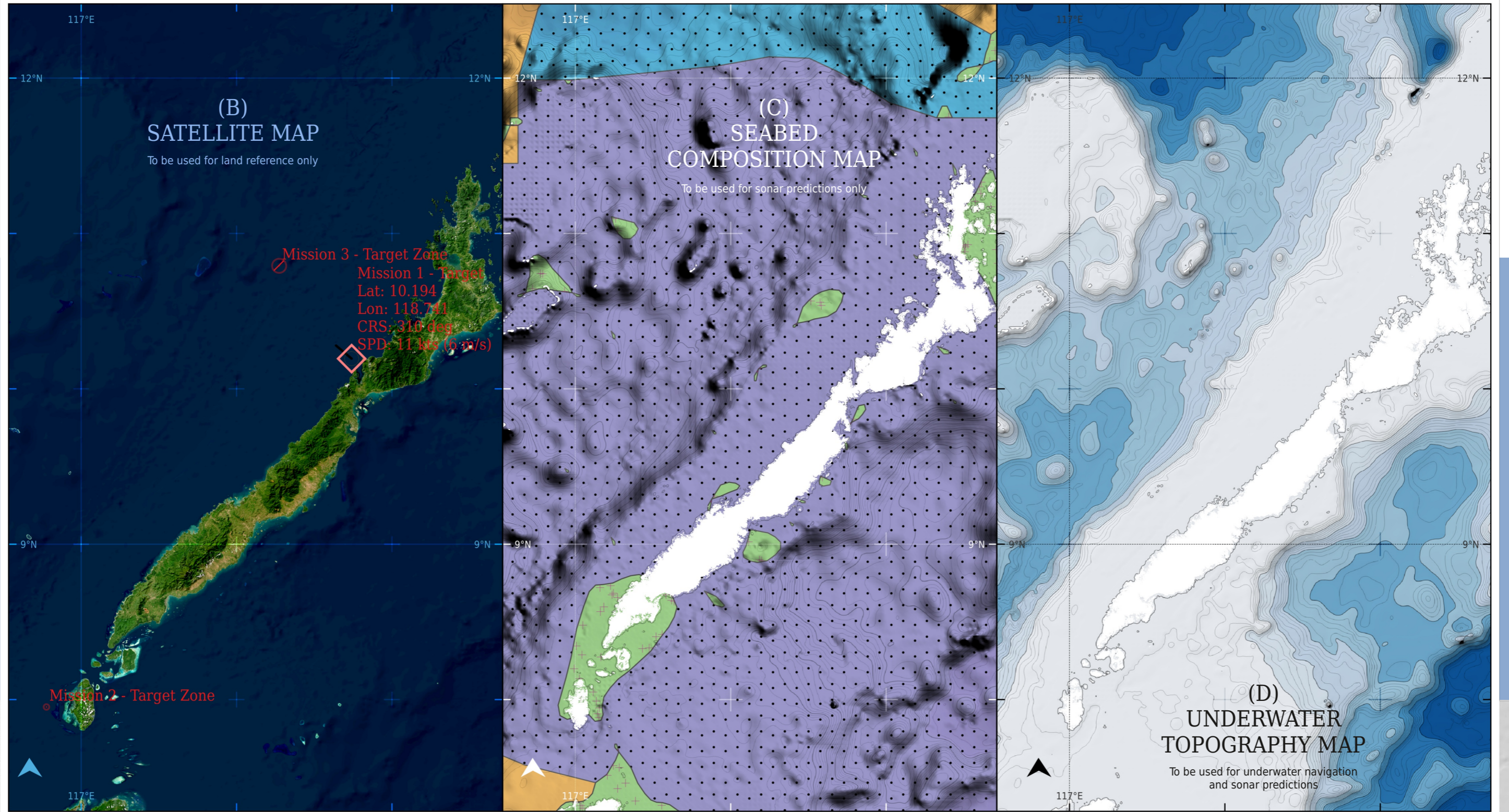
MIL-STD-2525 / NATO APP-6

**Depth**

- 100 m (328 ft)
- 200 m (656 ft)
- 300 m (984 ft)
- 400 m (1 312 ft)
- >400m depth swatch"/> > 400 m (1 312 ft)

**Contours**

- per 200 m (656 ft)
- per 1000 m (3 280 ft)



(B) SATELLITE MAP

To be used for land reference only

(C) SEABED COMPOSITION MAP

To be used for sonar predictions only

(D) UNDERWATER TOPOGRAPHY MAP

To be used for underwater navigation and sonar predictions

Mission 3 - Target Zone  
 Mission 1 - Target  
 Lat: 10.194  
 Lon: 118.741  
 CRS: 316 deg  
 SPD: 11 kts (6 m/s)

Mission 2 - Target Zone

15 0 15 30 NM

Scale 1:2500000

# MODERN NAVAL WARFARE

## OPERATION FROM DUSK TILL DAWN

CAMPAIGN MAPSET • SHEET 2 OF 2

### Seabed Composition

	Gravel and coarser		Radiolarian ooze
	Ash and volcanic sand/gravel		Diatom ooze
	Sand		Mixed calcareous/siliceous ooze
	Silt		Fine-grained calcareous sediment
	Clay		Sponge spicules
	Siliceous mud		Shells and coral fragments
	Calcareous ooze		Reef

### OPFOR Intelligence

Minimal opposition force expected.

### Underwater Topography

Edge of continental shelf. Both littoral and deep water conditions.

### Weather forecast

Moderate to strong breeze, few to scattered cloud coverage.

### Civilian traffic

Minimal civilian traffic reported.

### Depth

	0		2 500 m (8 202 ft)
	500 m (1 640 ft)		3 000 m (9 843 ft)
	1 000 m (3 281 ft)		3 500 m (11 483 ft)
	1 500 m (4 921 ft)		> 4 000 m (13 123 ft)
	2 000 m (6 562 ft)		